

# INSIDE a Graffunder



by  
Dave McOmie

**G** In these pages nearly a decade ago, I stated my preference for Graffunder gun safes. Well, that preference hasn't changed. When upgrade time came around, and I needed a larger B-rate gun safe for tool storage, I went comparison shopping. Two manufacturers stood out from the crowd: Amsec and Graffunder. Amsec's BF series safes are impressive, as are Graffunder's B series safes. Both are well made and easy on the eyes. The Amsec probably has a little better fire protection, but the Graffunder has a little better relocking system. All things considered, they are about a tie; a buyer simply can't go wrong with either one. In my case, the nod went to Graffunder because of their ball bearing hardplate, superior relocking system, and availability. The following photo story takes you inside my Graffunder.



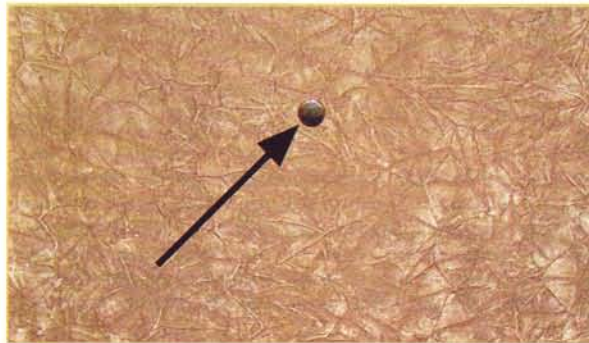
**1.** I chose the model B-13, which stands 72" tall x 32" wide x 22 3/4" deep, and weighs in at 1500 lbs. I went with a non-flashy color scheme: black with silver trim, which fades nicely into the garage shadows. I am quite happy not to have every passerby notice the safe. Out of sight, out of mind sort of thing, you know.



**2.** For the technical minded, here are two photos that show the handle locked and unlocked. This comes in handy when you need to know how far the handle travels to the fully unlocked position.



**3. Door open. Top shelf: Zero Halliburton scope case, which houses my microborescopes and 4 mm x 7" scopes. Also on top shelf (but out of view) is a Lockmasters Pro-Amp. Second shelf: GPS, case with wire tools, Olympus long scope case (in back). Third shelf: StrongArm lever rig, silica bag (to keep moisture level in safe from getting high enough to rust tools). Fourth shelf: flight bag (used only on jobs I fly to, because it weighs nothing and can accommodate a lot of tools and drill bits). Bottom shelf: drill bit bag, everyday tool bag.**

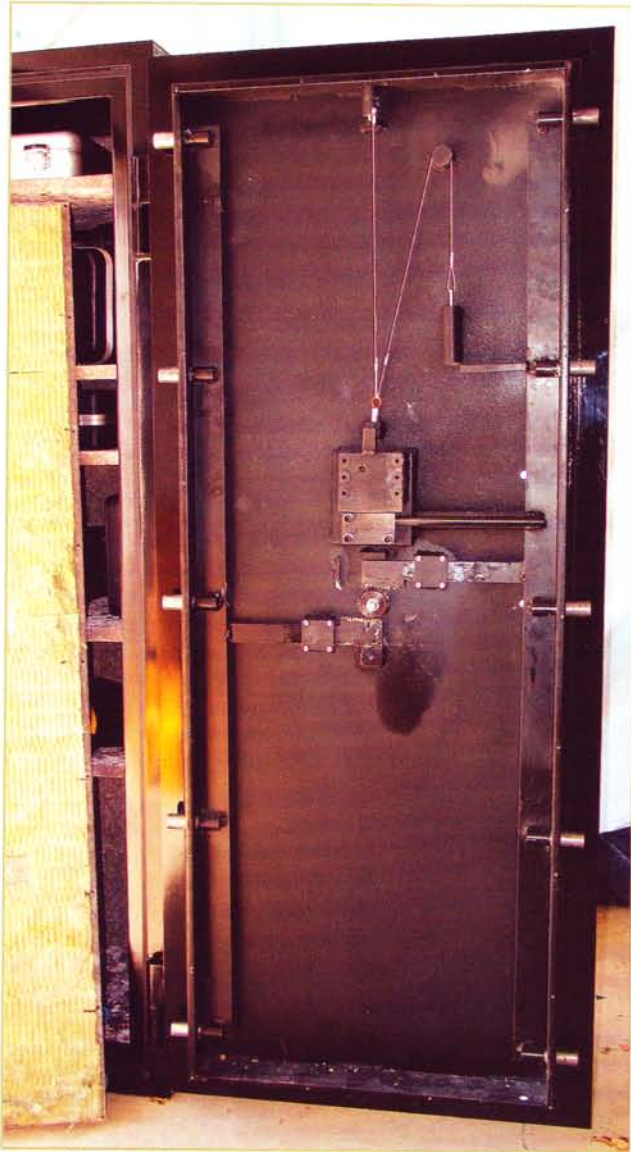


**4. Back side of door. Arrow points to the little silver electrician's plug. If we want to side drill to scope the change key hole, we just pop out this plug and scope the lock, right? (For the answer, look at the next photo.)**

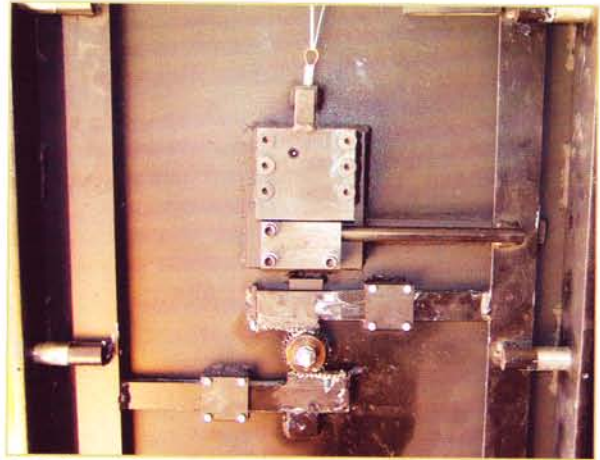


**5. Wrong! When we pop out the plug and look in the hole, this is what we see: an allen screw blocking our view of the CKH!!! More on this in a bit.**

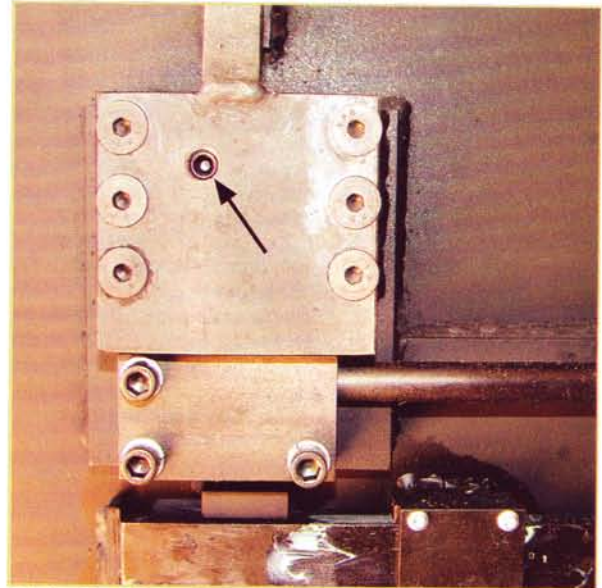




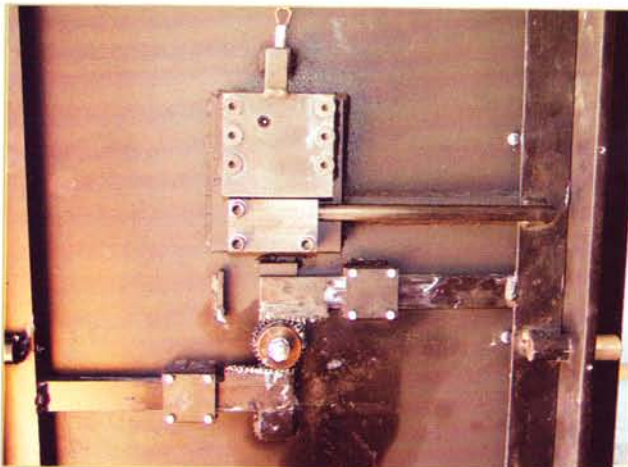
**6. Back side of door with panel removed. This is a very solid, two-way boltwork, with five active door bolts on both the opening and hinge sides. Notice that no lock is visible.**



**8. Boltwork in unlocked position. So where is the lock?**

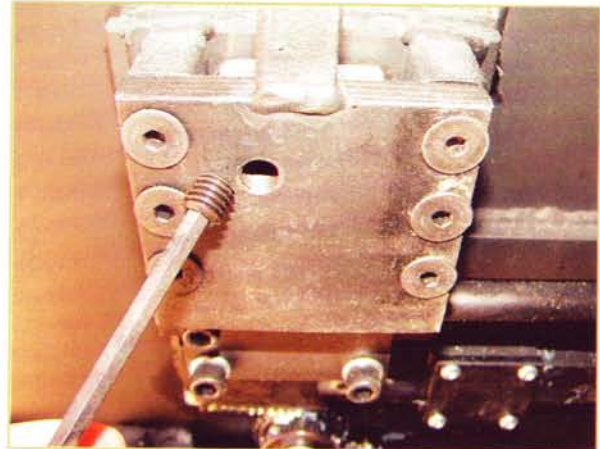


**9. The lock is well protected, with a punch-resistant backing plate, side walls, and wrap-around protection for the lock bolt. I will go out on a limb here, and say that the lock in a Graffunder gun safe is not merely punch-resistant, but is the closest thing to punchproof you are likely to see. The arrow points to the allen screw that blocks visual access to the change key hole.**



**7. Boltwork in locked position.**

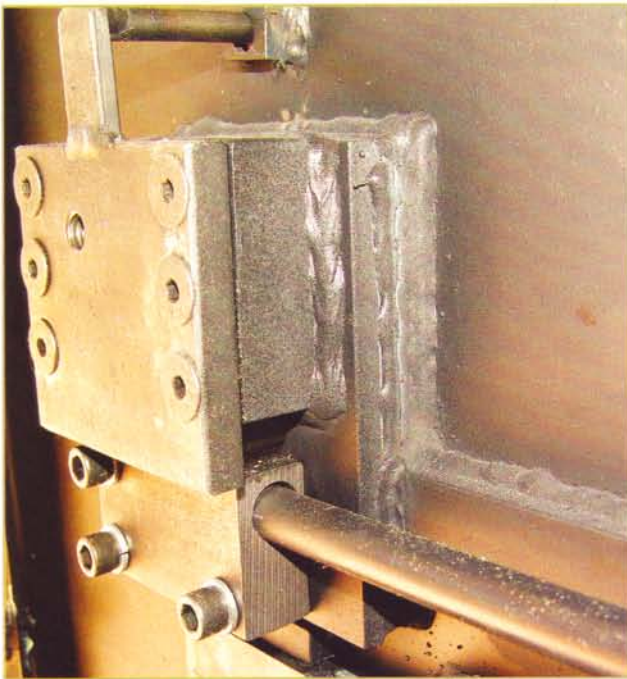
66 • Visit [www.TheNationalLocksmith.com](http://www.TheNationalLocksmith.com)



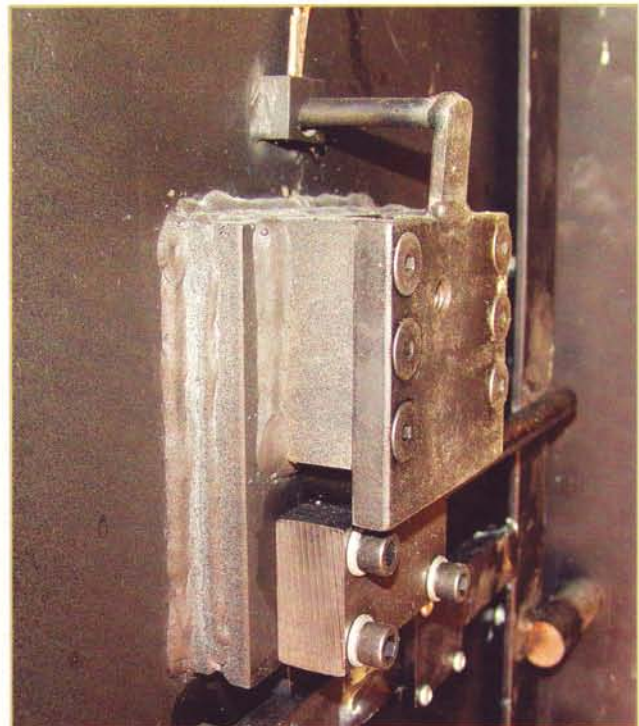
**10. With the allen screw removed, I can change the combo on my new Graffunder.**

Continued on page 68

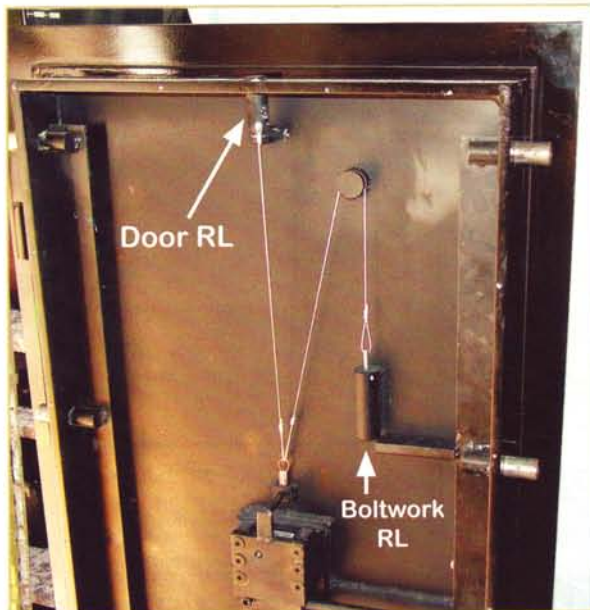




11. Three things to notice in this photo. First, the VD-mounted lock is protected on the opening side. Second, the lock bolt has its own encasement, which renders it virtually punchproof. Third, at the very top of the photo—what is the purpose of that round rod?



12. This view from the hinged side shows yet more protection for both the lock body and the lock bolt. And that round rod at the top: is it holding back a cable of some sort?



13. Indeed, that little round rod is a trigger for the two relocking bolts. The little rod goes through a hole in a fusible link. Attached to the other end of the link is a brass loop which holds back two cables. Attached to each cable is a relocking bolt. But these two relocking bolts aren't redundant; when fired, they do not perform the same task. The boltwork relocker prevents the boltwork from retracting. The door relocker holds the door closed even after the boltwork has retracted. No other modern American-made safe that I am aware of can boast of this feature. Bravo Graffunder!

14. Lastly, why does the Graffunder handle work like a Mercedes? The answer is simplicity and precision. Rather than overcomplicate the boltwork with a dozen or more gears that do nothing



other than look impressive, Graffunder went minimal, and designed a simple rack and pinion handle assembly. With only one sprocket and two racks (one for the opening side door bolts and one for the hinge side door bolts) there are very few moving parts. This decreases the likelihood of malfunction. Notice that the guides for the racks are fairly close to the sprocket. This minimizes boltwork slop, and provides the handle with a nice, tight feel as it retracts and extends the boltwork. All I can say is: Well done, Graffunder.

For more information, contact Graffunder:

Graffunder Safe and Vault, Inc.  
2920 River Road, Suite 5  
Yakima, WA 98902

Phone: 509-457-1801 • Fax: 509-457-1637

Web: [www.graffundersafes.com](http://www.graffundersafes.com)

Email: [info@graffundersafes.com](mailto:info@graffundersafes.com) 

Dave invites you to visit [davemcomie.com](http://davemcomie.com) for great deals on scopes, databases, and assorted safecracking sundries.